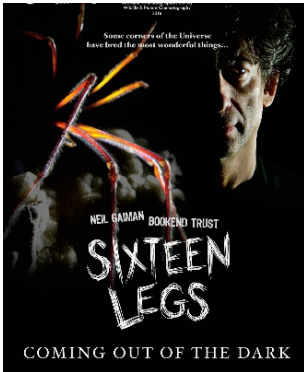


Sixteen Legs

Tours Nationally



The multi award-winning **SIXTEEN LEGS Project** is an exploration of the hidden underground world beneath our feet. This is a home of twisted beauty, haven to a variety of weird inhabitants but hostile to others. Enter a sanctuary full of unusual animals and misshapen rocks, overseen by still-living, giant prehistoric spiders the size of dinner plates.

This project has been assisted by the Australian Government's Visions of Australia program.

SIXTEEN LEGS: Enter the Cave Exhibition - A travelling exhibition of caves, cave biology and the exploration and discovery of how this unique environment works. This Exhibition showcases the results of over 30-years of scientific research, 7 years of filming, and hundreds of millions of years of evolution, from the break-up of Gondwana to the present day!

The Exhibition includes:

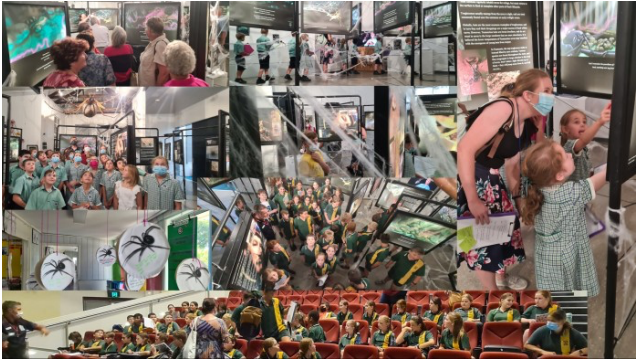
- (i) 48 giant backlit panels showcasing a photographic journey through the science and conservation of caves and groundwater, including the biology of the caves and the giant spiders that dominate the food chain;
- (ii) Woven within these is a dark fairytale telling of this story, created in collaboration with Queensland artist Jodee Taylah and international best-selling author **NEIL GAIMAN**;
- (iii) These panels are surrounded with artworks inspired by the exhibition, and created by artists and students around Australia;
- (iv) 2 giant mating spider replicas with 18 foot leg-spans in the roof of the exhibition area, and a giant egg-sac pulsating with spider young...

"Truly magnificent. One of the best cave-related displays that I have seen in my viewings around the world." - Andy Spate - Australasian Cave and Karst Management Association.

The Exhibition is paired with the **SIXTEEN LEGS Documentary**, a nature documentary like no other. Featuring Neil Gaiman alongside appearances by Stephen Fry, Tara Moss, Adam Hills, and Mark Gatiss, and with a score co-written and performed by Kate Miller-Heidke.

"I don't think it could ever be said that the work of Attenborough will at any point be irrelevant – but, like all art, there is always room for adaptation and imagination. SIXTEEN LEGS arguably does just that." – Wild Melbourne Review.

After a short hiatus due to COVID restrictions we are extremely excited to be back on the road and touring. We have chosen many karst areas for our tour but have also included many other areas in an effort to educate the wider community about karst, caves, their inhabitants and the environment in general. The exhibition and documentary are successfully exciting students and the public and caves in general. As a not-for-profit organisation we try to raise funds wherever we can, and it is very satisfying to also put money back into regional and remote communities across Australia that have been struggling in the current economic climate.



This year we have already toured several Queensland locations including Goondiwindi, Emerald and The Caves near Rockhampton. We've already had over 4000 people visit the exhibition across these locations with a portion of those being repeat visitors, mostly school students, who came back with their families. In addition to that we've had over 200 people

provide artworks for display in the exhibition across numerous locations, from junior primary students right through to a giant metal spider that was produced by Goondiwindi Engineering (seen below coming out of a standard sized doorway). Some of the artworks now travel with the exhibition.



Each venue presents its own interesting challenges and experiences. Whether it be a heritage building with wooden rafters, incredibly high ceilings or a showgrounds pavilion/shed the exhibition has the flexibility to fit lots of different spaces. This also, makes it interesting for us as the exhibition takes on a new appearance at each venue to suit the space.

Our visit to Capricorn Caves included a totally unique and new experience, with a special screening of the film for a select audience within Cathedral Cave on World Environment Day. With a mostly flat 230 million-year-old section of cave wall, great natural acoustics, and periodic visits from bats and a frog on sentry duty,



this was a new way to watch the film, and the very first time it has ever been screened in a cave. An informative Q&A session after the documentary was held with Dr Niall Doran, Scientist behind the research, Director of

Bookend Trust and Co-Director of the documentary. Capricorn Caves staff Mindy and Dan are to be commended on successfully pulling this event together and supporting us throughout the process. I think all would agree that it was a lovely setting for such an event.

The exhibition is currently on display in Charleville until early October after five weeks up at The World Theatre in Charters Towers. We were supposed to go to Wellington in New South Wales later this year, but COVID has put a stop to that. We are still planning to tour Western Australia for two years starting in January 2022. The tour has already extended from two years to three and we are open to adding further locations if there are suitable venues and support to do so. For further information feel free to get in contact with me at sixteenlegs@bigpond.com or 0439840758.